



# BUILD-SAFE

**A macromodule for building damage and safety assessment, propping and shoring**

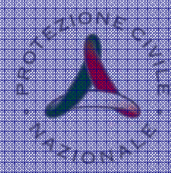
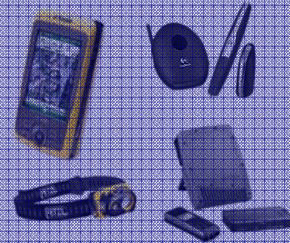
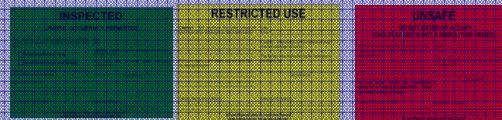


Funded by the European Commission under the "Preparatory actions on an EU rapid response capability"



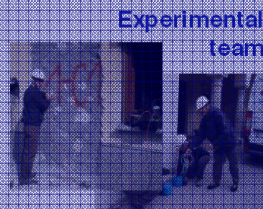
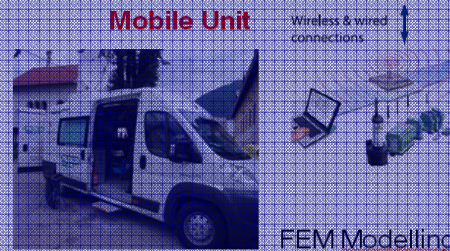
## Basic Safety Assessment Module (BSA)

Post-earthquake conventional damage and safety assessment of buildings through visual inspection and advanced technological tools for data collection and management. Intended mainly for residential buildings.

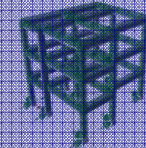


## Advanced Safety Assessment Module (ASA)

Advanced seismic safety assessment of buildings based on numerical-experimental procedures. Quantitative evaluation of the residual capacity of a structure. Intended for strategic buildings.



FEM Modelling



## Short Term Countermeasure Module (STC)

Provisional works for the safe use of damaged buildings and/or preservation of cultural heritage (propping, confining ties). Intended for All types of buildings, even monumental.

